

## Rab28

**Catalog Number:** 21061

**Gene Symbol:** Rab28

**Description:** Anti-Rab28 Rabbit Polyclonal Antibody

**Background:** Rab28 encodes a member of the Rab- Western blot:  
subfamily of Ras-related small GTPases, and is  
involved in regulating intracellular trafficking.

**Immunogen:** A synthetic peptide from the  
C-terminal region of human Rab28

**Tested Applications:** ELISA, WB, IHC, IP

**Recommended dilutions:**

ELISA: 1:1000-1:5000

WB: 1:100-1:1000

IHC: 1:100-1:1000

**Concentration:** 0.2 mg/ml

**Host:** Rabbit

**Clonality:** Polyclonal

**Purity:** Purified from antisera

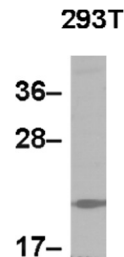
**Format:** Liquid

**Preservative:** No

**Constituents:** PBS (without Mg<sup>2+</sup> and Ca<sup>2+</sup>), pH7.4,  
150 mM NaCl, 50% glycerol

**Species Reactivity:** Anti-Rab28 antibody  
recognizes Rab28 of vertebrates.

**Storage Conditions:** Store at -20°C. Avoid freeze  
/ thaw cycles



**WB: anti-Rab28 pAb**

Whole-cell lysate of HEK-293T cells was used for  
western blot with the polyclonal anti-Rab28  
antibody (Cat. # 21061).

FOR RESEARCH USE ONLY. NOT FOR DIAGNOSTIC APPLICATIONS